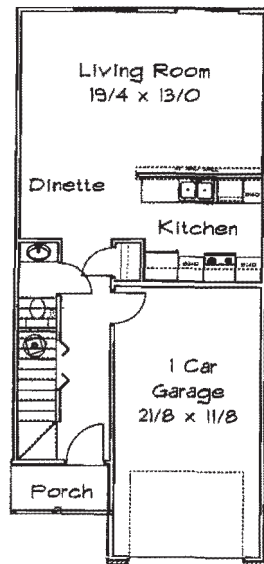


COLOSSEUM TOWNHOUSES



FIRST FLOOR PLAN

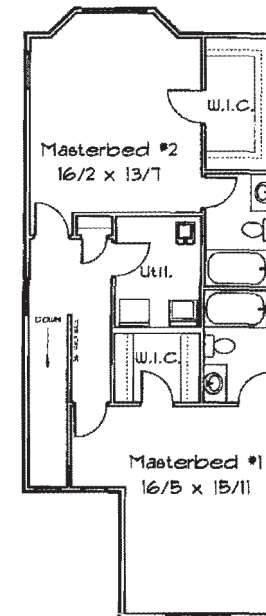


ALL UNITS
565 SqFt

7159-7160-7186-7198

Colosseum Drive
Rockford, IL
61107

SECOND FLOOR PLAN



A1 UNIT
839 SqFt
1404 SqFt Total

2 MASTER SUITES W/
PRIVATE BATHS & WALK-IN CLOSETS
MAIN FLOOR POWDER ROOM
2ND FLOOR LAUNDRY
WASHER & DRYER INCLUDED
ENERGY-EFFICIENT APPLIANCES
INDIVIDUAL, PRIVATE ENTRANCES
CABLE-READY CONNECTIONS
CLOSE TO SHOPPING, DINING, & ENTERTAINMENT
\$1150.00 MONTH

CALL 815-885-2212 FOR MORE INFORMATION
EMAIL EILEENHOLTAN@GMAIL.COM

LOCATED ONE BLOCK EAST OF PERRYVILLE RD. & 2 BLOCKS NORTH OF STATE ST. ON COLOSSEUM DRIVE